



# Cooper Lighting - REVOLVE

Portfolio Overview

# About Signify and Cooper Lighting

## Signify acquired Cooper Lighting in 2020.

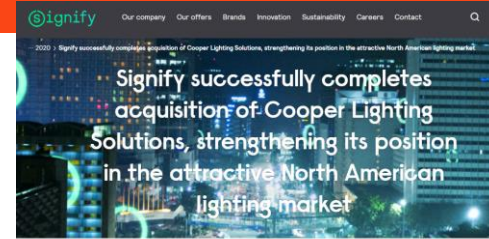
### Signify's Brand Architecture

Signify Classified - Internal

#### Signify brand architecture

The more we move to the right, Signify plays a more dominant branding role in line with our company positioning as a technology company

	Value brands	Specialty brands	Regional/local brands	Core brands	Technologies/ventures	Services
<b>Global Brand Architecture*</b>  <b>B2B</b>	   	     	           	    	   	
<b>B2C</b>  <small>*Regional brands included</small>	  			  		
30	5	6	11	4	4	



### Press Release

March 2, 2020

#### Signify successfully completes acquisition of Cooper Lighting Solutions, strengthening its position in the attractive North American lighting market

Eindhoven, the Netherlands – Signify (Euronext: LIGHT), the world leader in lighting, has completed the acquisition of Cooper Lighting Solutions from Eaton. The transaction strengthens Signify's market position and better positions the company to capture growth in the North American lighting market.

"We're very excited to welcome Cooper Lighting to Signify and to start working together," said Eric Rondolat, CEO of Signify. "Since the announcement of the transaction on October 15, the teams have been working hard to prepare the integration plans and are now ready to move fast to realize the synergies. Together, we will drive innovation, advance in connected lighting and systems, creating significant value for our customers. And it will give us the scale and operational efficiencies to make our offerings even more competitive."

"We could not be more excited to officially become part of the world leader in lighting," said Kraig Kasler, President of Cooper Lighting Solutions. "Bringing together two businesses that share a vision on where the industry is headed and a purpose to drive sustainable growth in North America and beyond, will result in significant benefits for our customers, our employees and all our stakeholders."

Signify acquired Cooper Lighting for USD 1.4 billion on a cash and debt-free basis. Cooper Lighting, based in Peachtree City, GA, United States, generated<sup>1</sup> EUR 1,477 million of sales, Adjusted EBITA of EUR 150 million and EBITA of EUR 165 million in 2019.

--- END ---

For further information, please contact:

Signify Investor Relations

Robin Jansen

Tel: +31 6 1594 4569

E-mail: [robin.j.jansen@signify.com](mailto:robin.j.jansen@signify.com)

# REVOLVE – Product Range Overview



Panel



Suspension



Batten

Office &  
General  
Indoor Area



Floodlight  
with Sensor



Floodlight

Outdoor



Solar Street

Solar  
AIO  
Street



Waterproof



Highbay



Bulkhead

Industrial



Recessed  
Downlight



COB  
Downlight



Spotlight

Commercial



Leading Lighting  
Brand

50,000 Hours  
Lifetime

Trusted Quality  
with CB and CE  
approbations

Comprehensive  
Range for General  
Area Lighting

Trusted Quality  
with CB and CE  
Certifications

3 years warranty

# REVOLVE LED BATTEN

- Excellent product aesthetics, easy installation
- 1:1 replacement for conventional battens in terms of light performance, installation and length
- Uniform light distribution in every application



Specifications	
<b>Wattage</b>	15W, 32W
<b>Lumen</b>	1600 Lm, 3200 Lm
<b>CRI</b>	80
<b>CCT</b>	4000K, 6500K
<b>IP Rating</b>	20
<b>Power Factor</b>	> 0.9
<b>Lengths</b>	600mm, 1200mm



# REVOLVE WATERPROOF

- Comprehensive Range with three length options 600/1200/1500mm
- Energy saving and longer lifetime reduce operating costs
- Robust and durable (IP65 rating)



Specification	
<b>Wattage</b>	42W, 60W, 65W
<b>Lumen</b>	4,800/6,800/7,400 lm
<b>Length</b>	600mm, 1200mm, 1500mm
<b>CRI</b>	>80
<b>CCT</b>	4000 / 6500 K
<b>IP Rating</b>	<b>IP 65</b>
<b>Power Factor</b>	<b>&gt;0.9</b>



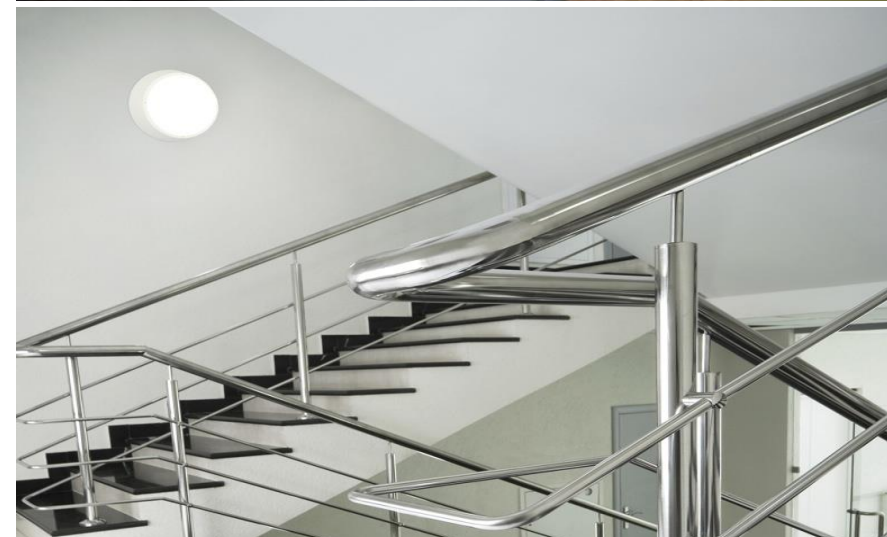
# REVOLVE BULKHEAD

- Delivering the right visual comfort in common areas
- Optional motion detection
- Water- and vandalproof as standard (IP65 and IK08)
- Larger diameter of 285mm



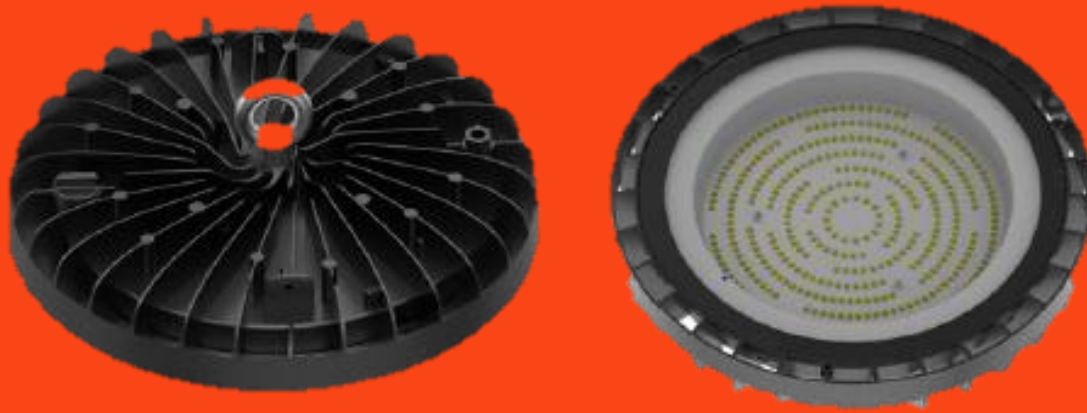
## Specifications

<b>Wattage</b>	11W, 17 W, 19W (MDU)
<b>Lumen</b>	1,100lm, 1,700 lm
<b>Diameter</b>	285 mm
<b>CRI</b>	>80
<b>CCT</b>	3000K, 4000 K
<b>IP Rating</b>	IP 65
<b>Power Factor</b>	>0.9



# REVOLVE HIGHBAY

- Long Lifetime
- Energy-efficient and excellent light quality
- Wide range of lumen options (up to 22k lumens)
- For high ceiling warehouses and industrial applications



Specifications	
<b>Wattage</b>	100W, 150W, 200W
<b>Lumen</b>	11,000/ 16,500/ 22,000 lm
<b>IK Rating</b>	IK06
<b>CRI</b>	>70
<b>CCT</b>	6500K
<b>IP Rating</b>	IP 65
<b>Power Factor</b>	>0.95





# REVOLVE LED PANEL

- Higher energy savings and long lifetime
- Uniform light distribution
- Guaranteed luminous flux and durability
- Quick and Easy Installation



Specifications	
<b>Wattage</b>	40W, 50W
<b>Lumen</b>	3,800/5000 lm
<b>CRI</b>	>80
<b>CCT</b>	4000K / 6500K
<b>IP Rating</b>	IP 20
<b>Power Factor</b>	>0.9
<b>Size Options</b>	600x600, 300x1200, 600x1200mm



# REVOLVE COB PRO DOWNLIGHT

- COB design, Aluminium housing , Stylish product look and feel
- High Efficacy , 90 lm /w
- Wide range of sizes, lumens and CCT options



Φ 70/100/  
140/200mm



Specifications	
Wattage	5/7/10/20/30/40W
Lumen	From 400 lm up to 3600 lm solution
CRI	>80
CCT	3000K/4000K/6500K
IP Rating	IP 20 / IK03
Power Factor	>0.9
Cut out size options	70 / 100 / 140 / 200 m

# REVOLVE SPOTLIGHT

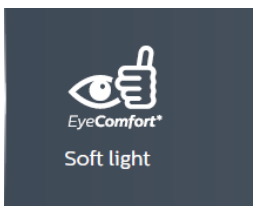
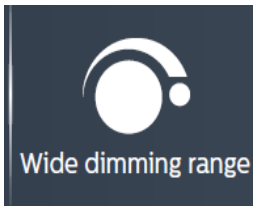
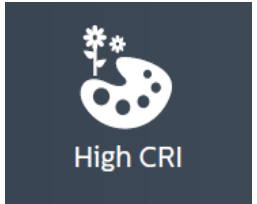
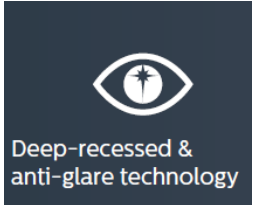
- Deep recessed and anti-glare technology
- Wide dimming range
- High CRI  $\geq 90$
- Soft Light



- 2700K
- 3000K
- 4000K

24/36/50D Spot

Φ 55/75/95mm 



Specifications	
Wattage	7W, 9W, 12W, 15W
Cutout Size Options	55/75/95mm
CRI	90
CCT	2700K/3000K/3500K
UGR	<9
Power Factor	>0.9
Dimmable	0-10 V dimming control

# REVOLVE Downlight

- Comprehensive range, Stylish product look and feel
- High Efficacy , 90 lm /w
- Wide range of sizes, lumens and CCT options



Ø 105-115/120-130/  
145-155/195-205mm



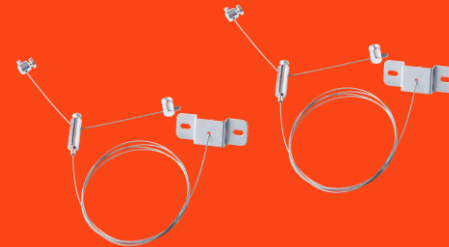
Specifications	
<b>Wattage</b>	5/9/12/15/18/24W
<b>Lumen</b>	From 400 lm up to 2150 lm solution
<b>CRI</b>	>80
<b>CCT</b>	3000K/4000K/6500K
<b>IP Rating</b>	IP 20 / IK03
<b>Power Factor</b>	>0.9
<b>Cut out size options</b>	100 / 125 / 200 m

# REVOLVE SUSPENSION LUMINIAIRE

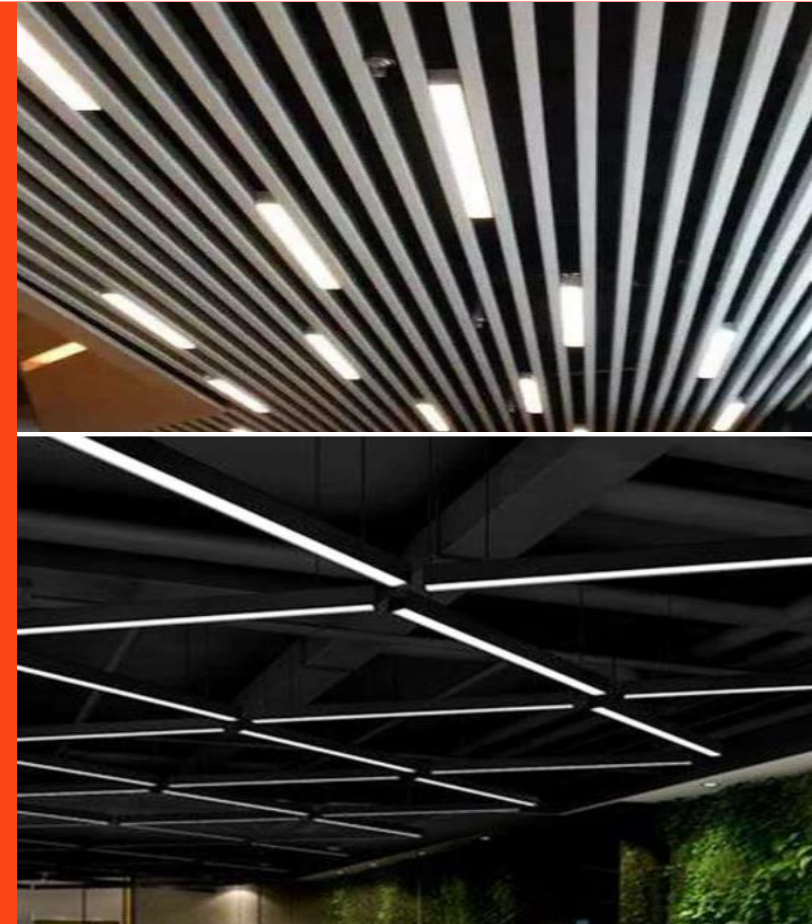
- Stylish product look and feel
- Excellent uniformity
- Suspension mounting with multiple accessory options
- Flicker-free



## Accessories



Specification	
<b>Wattage</b>	From 14W to 34W
<b>Lumen</b>	From 1300 lm to 3000 lm
<b>CRI</b>	>80
<b>CCT</b>	4000K / 6500K
<b>IP Rating</b>	IP 20
<b>Power Factor</b>	>0.9
<b>Length and Width</b>	W7L120, W12L120, W7L60, W12L60, W10L120



# REVOLVE FLOODLIGHT

- High-performance asymmetrical and symmetrical optics
- Reliable quality: Die-casting aluminum housing guarantees robustness and wind force protection
- Perfect for outdoor general area lighting, parking lots and industrial areas



Amenity



Area



Landscape

## Specifications

<b>Wattage</b>	30W/ 50W/ 70W/ 100W/ 150W/ 200W
<b>Lumen</b>	3600lm/ 6000lm/ 8400lm/ 12000lm/ 18000lm/ 24000lm
<b>CRI</b>	>80
<b>CCT</b>	3000 / 6500 K
<b>IK Rating</b>	IK 07
<b>IP Rating</b>	IP 65
<b>Sensor Option</b>	Options with Motion Detection Unit (MDU)



Bill board



Parking



Architectural

# REVOLVE SOLAR AIO STREET LIGHT

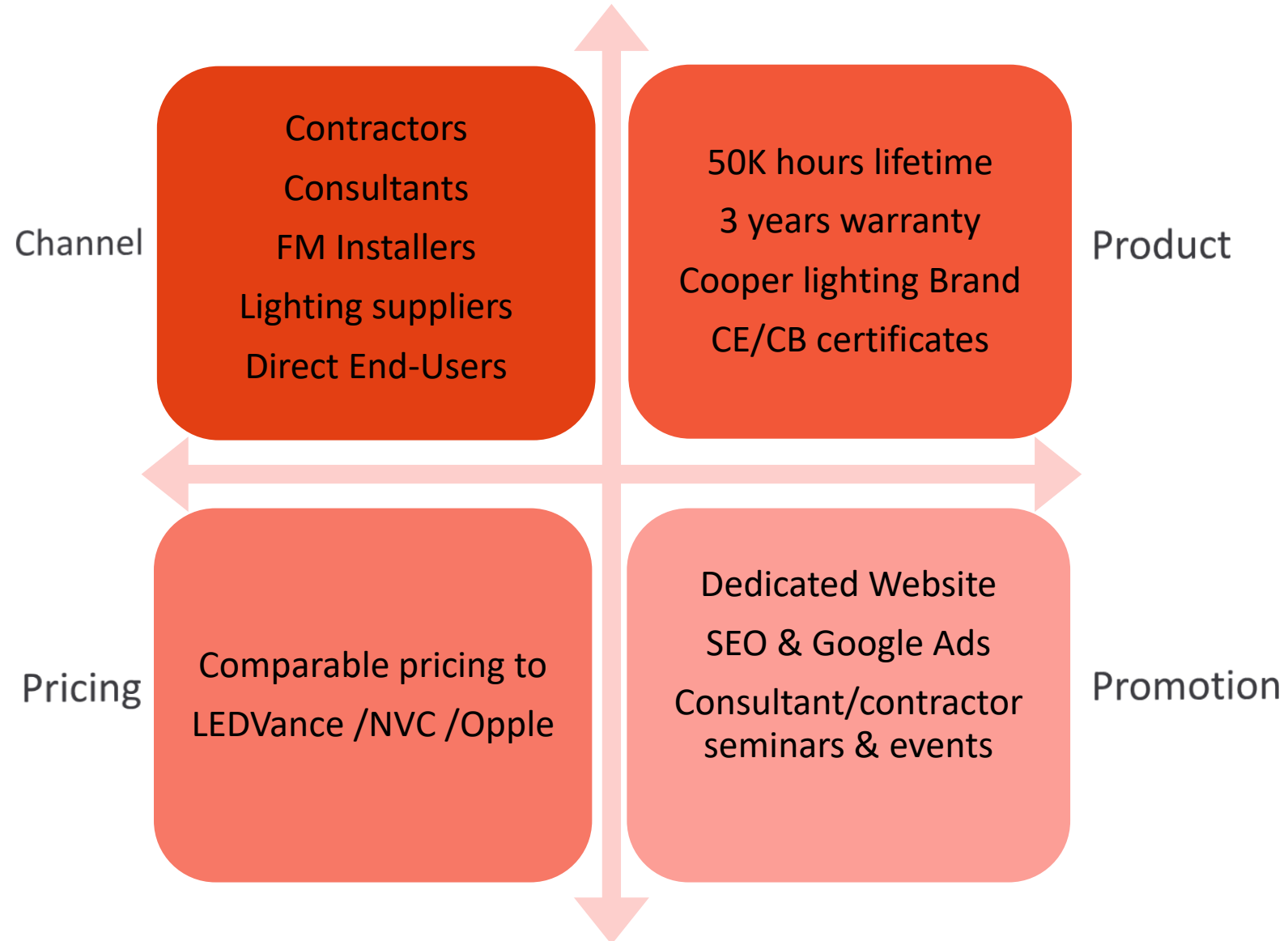
- Adjustable Light Module
- Microwave Sensor
- Universal Mounting Bracket
- 3G vibrant resistant
- 100% energy Saving



	BRP715 LED50 CW Solar	BRP715 LED70 CW Solar	BRP715 LED90 CW Solar	BRP715 LED120 CW Solar	BRP715 LED180 CW Solar
<b>Wattage</b>	27W	40W	50W	67W	95W
<b>Input Voltage</b>	12VDC				24VDC
<b>Sensor</b>	Microwave				
<b>LED Model Quantity</b>	5050 32 Pcs	5050 32 Pcs	5050 44 Pcs	5050 60 Pcs	5050 96 Pcs
<b>Luminous Flux</b>	5000	7200	9000	12000	17500
<b>Efficacy</b>	190	180	180	180	185
<b>CCT</b>	5700K				
<b>CRI</b>	Ra>70				
<b>IP Rating</b>	IP65, according to standard EN 60529				
<b>IK Rating</b>	IK08 according to standard EN 62262				
<b>Solar Panel</b>	18V/25W	16V/40W	18V/50W	18V/60W	36V/80W
<b>Lithium Ferro Phosphate Battery</b>	153.6WH	230.4WH	307.2WH	384.0WH	614.4WH
	12.8V12AH	12.8V18AH	12.8V24AH	12.8V30AH	25.6V24AH
<b>Battery Lifespan</b>	>2000 times cycle				
<b>Dimming Profile</b>	Configurable				
<b>Ambient temperature</b>	0°C to 55°C (32°F to 131°F)				
<b>Change controller</b>	MPPT intelligent controller				
<b>Housing Material</b>	Heavy-duty die-cast aluminum (EN AC-46100)				
<b>Surface Treatment</b>	Anti-UV thermosetting polyester				



# Go To Market Plan



# Product Packaging Outlook

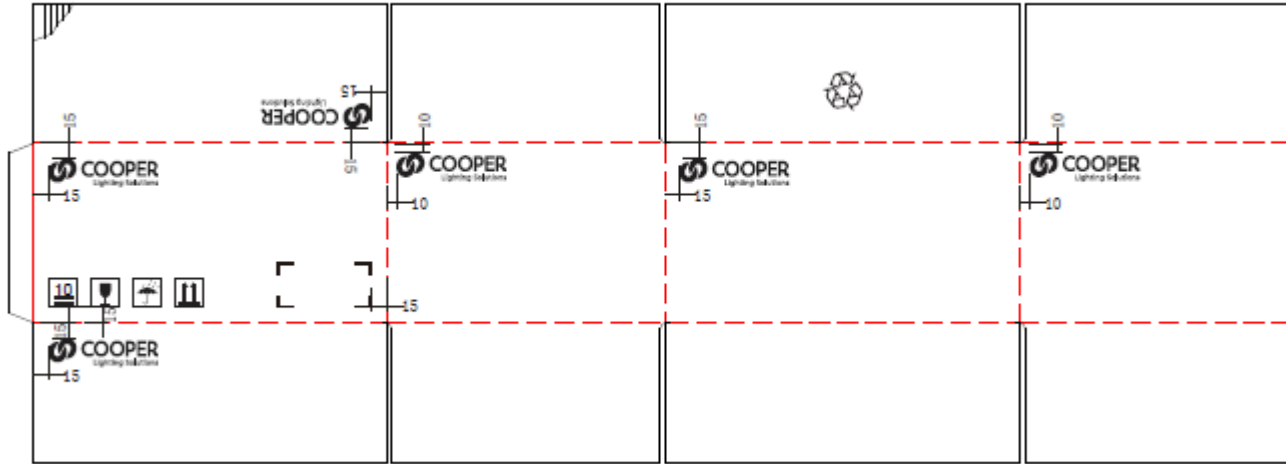


Image 1: Product Packaging

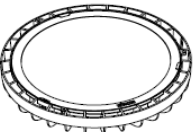





<b>HIGHBAY</b>  <b>DATE CODE</b> MM/YY <b>Made in China</b> 	<b>CATALOG NO.</b> 12345678		
	<b>DESCRIPTION</b> REVOLVE120 HBY 100w/865, 100W, 0.23A, 6500K		
	<b>VOLTAGE</b> 120-277V	<b>WATTAGE</b> 100W	<b>QUANTITY</b> 2
	<b>MATERIAL NO.</b> 911401828484		<b>UPC-A NO.</b> 911401828484

Image 2: Outer Box labeling

		<b>DATE</b> MM/YY	
<b>CATALOG NO.</b> REVOLVE120 HBY 100w/865	<b>ORDER NO.</b> 12345678		
<b>MATERIAL NO.</b> 911401828484	50/60 Hz	120 -277V	100W
<b>Made in China</b>		0.33A@120V	

		<b>DATE</b> MM/YY	
<b>CATALOG NO.</b> REVOLVE120 FLD 365/830 SYM			
<b>ORDER NO.</b> 12345678			
<b>MATERIAL NO.</b> 91140184318	50/60 Hz	<b>Made in China</b>	
120 -277V	30W	0.33A@120V	

灯体标签投光灯小瓦数模板  
34\*12MM



		<b>DATE</b> MM/YY	
<b>CATALOG NO.</b> REVOLVE120 FLD 70w/830 SYM			
<b>ORDER NO.</b> 12345678			
<b>MATERIAL NO.</b> 911401845183			
50/60 Hz	120 -277V	70W	
0.33A@120V	<b>Made in China</b>		

Image 3: Product labeling

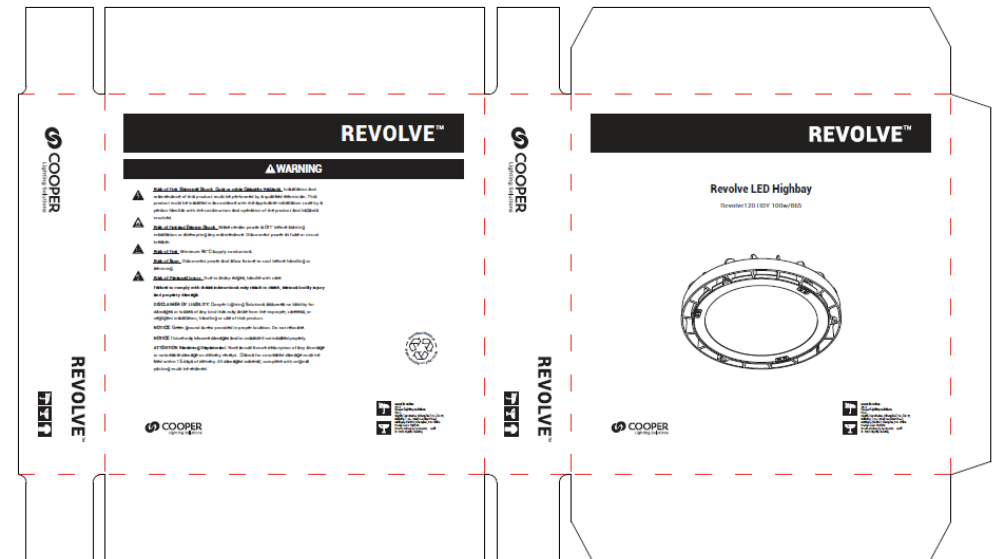


Image 4: Warning and Product labeling



**COOPER**

Lighting Solutions